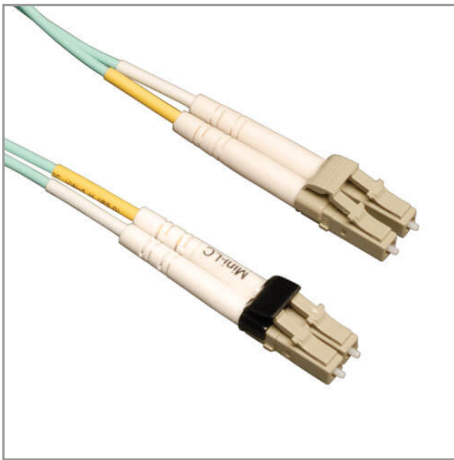


**Important Note**

OM3 can support 40GBASE-SR4 / 100GBASE-SR10 in applicable parallel optics networks.

**10Gb Duplex Multimode 50/125 OM3 LSZH Fiber Patch Cable (Mini-LC / LC) - Aqua, 1M (3 ft.)**

MODEL NUMBER: **N836-01M**



**Highlights**

- Mini-LC to LC Fiber Patch Cable, 1 Meter
- Designed for 10-Gig Ethernet applications...OM3 Rated
- For use with networking hardware employing mini-LC SFP transceivers
- Max 10Gb distance of 300 meters @850nm
- Low-Smoke, Zero Halogen (LSZH) Aqua jacket

**Package Includes**

- 1M (3-ft.) 10Gb Duplex MMF 50/125 OM3 LSZH Patch Cable ( Mini-LC / LC) - Aqua

**Features**

- Mini-LC to LC Fiber Patch Cable, 1 Meter
- Designed for 10-Gig Ethernet applications...OM3 Rated
- For use with networking hardware employing mini-LC SFP transceivers
- Max 10Gb distance of 300 meters @850nm
- Low-Smoke, Zero Halogen (LSZH) Aqua jacket
- Use with Brocade FC8-64 and other Mini-LC SFP devices

**Specifications**

| OVERVIEW              |              |
|-----------------------|--------------|
| UPC Code              | 037332165695 |
| Technology            | Multimode    |
| Optical Mode          | OM3          |
| PHYSICAL              |              |
| Cable Jacket Color    | Aqua         |
| Connector Color       | White; Beige |
| Cable Jacket Material | LSZH         |

|                                      |                                                       |
|--------------------------------------|-------------------------------------------------------|
| Cable Jacket Rating                  | OFNR                                                  |
| Clad Diameter (microns)              | 125                                                   |
| Core Diameter (microns)              | 50                                                    |
| Number of Fibers                     | 2                                                     |
| Cable Length (ft.)                   | 3.3                                                   |
| Cable Length (m)                     | 1.01                                                  |
| Cable Length (in.)                   | 39.4                                                  |
| Minimum Bend Radius                  | 20 mm (Dynamic); 10 mm (Static)                       |
| Shipping Dimensions (hwd / in.)      | 0.25 x 6.00 x 6.40                                    |
| Shipping Dimensions (hwd / cm)       | 0.64 x 15.24 x 16.26                                  |
| Shipping Weight (lbs.)               | 0.07                                                  |
| Shipping Weight (kg)                 | 0.03                                                  |
| Fiber Cable Length                   | 1M (3.3 ft)                                           |
| <b>ENVIRONMENTAL</b>                 |                                                       |
| Operating Temperature Range          | -4° to 140°F (-20° to 60°C)                           |
| Storage Temperature Range            | -4° to 140°F (-20° to 60°C)                           |
| Operating Humidity Range             | 5% to 85% RH, Non-Condensing                          |
| Storage Humidity Range               | 35% to 65% RH, Non-Condensing                         |
| <b>COMMUNICATIONS</b>                |                                                       |
| Network Compatibility                | 1 Gbps (Gigabit); 10 Gbps; 25 Gbps; 40 Gbps; 100 Gbps |
| Attenuation @ 850NM                  | 3.0 dB/km                                             |
| Insertion Loss                       | 0.20 dB                                               |
| <b>CONNECTIONS</b>                   |                                                       |
| Side A - Connector 1                 | LC DUPLEX (MALE)                                      |
| Side B - Connector 1                 | MINI LC DUPLEX (MALE)                                 |
| Endface Polish                       | PC                                                    |
| <b>FEATURES &amp; SPECIFICATIONS</b> |                                                       |
| Push/Pull Tabs                       | No                                                    |
| Breakout                             | No                                                    |
| Trunk                                | No                                                    |
| <b>STANDARDS &amp; COMPLIANCE</b>    |                                                       |
| Product Compliance                   | RoHS; REACH                                           |

**WARRANTY & SUPPORT**

Product Warranty Period  
(Worldwide)

Lifetime limited warranty